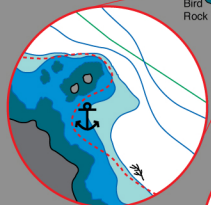
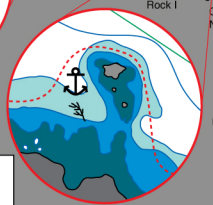


# FISHING GROUNDS CHART



Bird Rock II



Bird Rock I

**TIDE ARROWS**  
Indicate direction and rate of tides at given times.

Tide	Arrow	Knots
At Low Water	A	1 1/4
2 Hours After Low Water	B	1/2
3 Hours After Low Water	C	1/2
At High Water	D	1 1/4
3 Hours After High Water	E	1/2

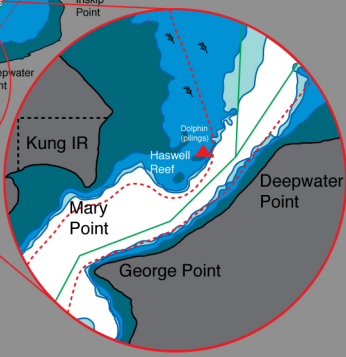
**LEGEND**

- Land
- Drying
- 5 Metre depth
- 10 Metre depth
- Safe running route
- Danger - Rocks / Kelp
- Navigational aid
- Kelp
- Driftwood anchorages
- Halibut / Lingcod
- Salmon

**GPS SAFE PASSAGE WAYPOINTS**

QCL Dock	54 00.175 N 132 38.640 W
Bain Point	54 01.451 N 132 35.240 W
George Point	54 02.541 N 132 34.250 W
Deepwater Point	54 02.957 N 132 33.023 W
Mazzaredo Islands	54 05.490 N 132 32.871 W
Cape Naden	54 07.459 N 132 34.724 W
Klashwun Point	54 09.333 N 132 39.498 W
Green Point	54 09.286 N 132 32.376 W
Red Can	54 04.056 N 132 31.926 W
Cape Edenshaw	54 06.190 N 132 26.503 W

Chart not intended for navigational use  
Depth in Metres  
1 Metre = 3 Feet



Alexandra Narrows

Queen Charlotte Lodge  
Germania Creek  
Twin Creeks  
Naden Harbour  
Craft Bay